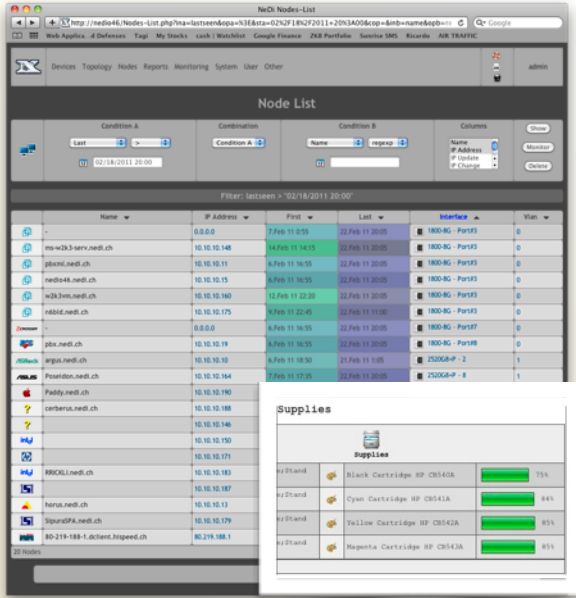


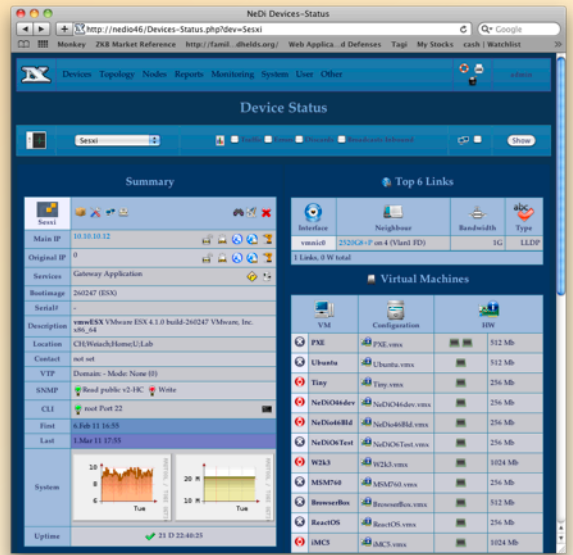
www.nedi.ch



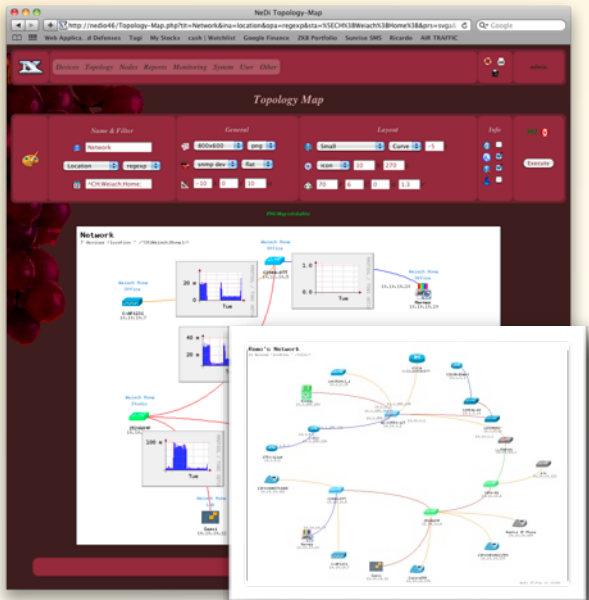
NeDi can discover your network on a regular basis. It allows you to locate and track all connected devices, monitor traffic or broadcasts, send mails or SMS when certain events occur and backup the configuration of your switches & routers in addition. It even lets you observe the printer supplies!



Various templates offer optimal look and feel, whether you use it on a big screen, or on a mobile device. Language, layout and other settings can be adjusted on a per user basis.



A modular architecture provides cross vendor support and simple expandability. It even supports virtualized environments, where you can manage the VMs natively. Seamless visibility lets you to pinpoint bottlenecks or network related problems in your data center.



The self-documenting concept is based on the network configuration itself. Dynamic maps can also be used to visualize traffic & errors between buildings or cities for example.

I developed this tool during the last decade! Being a networker myself, I implemented exactly what I needed, just the way I wanted to use it...

Remo Rickli

+41 41 511 98 41
rickli@nedi.ch
www.nedi.ch

